



Building the new Elementary School, Kaiserslautern

Data and facts

Company	BBGS in consortium with MICKANGeneral-Bau-Gesellschaft mbH and Steffensky & Ringle
Type	Building service
Runtime	09.2016 - 08.2019
Principal	Landesbetrieb LBB

[Project report online](#)

www.porr-group.com



Strong structure and internal quality.

Construction challenge

The inside of the building complex is also worth seeing, and in particular the hub of the school building, the “Commons” – a large communal area that is connected to all the main areas of the building. The main entrance is located on the north-east side of the building and access checks will be carried out here. It is flanked by the administrative area and information centre.

The large glass-fronted north-west facade of the commons hall opens into the school’s “green classroom”, spectacularly designed to mimic a traditional amphitheatre. A stage tower is integrated into the commons. This curved building has an inclined upper edge that required particular manual skill from our formwork team. The clay tile cladding on the interior and external facades required a special building permit.

For the auxiliary campus buildings, called neighborhoods, we opted for structures similar to the main building. The communal area, consisting of a number of study studios, is a multifunctional meeting point. These studios can be extended into the communal area as needed, using mobile dividing walls. The students also have access to group areas, individual study rooms, art and music rooms and a large sports hall. An industrial kitchen built to US hygiene standards ensures that nobody need go hungry.

Once again, BBGS was able to distinguish itself and hand over a diverse project completed to the highest standards. The school benches today are filled by up to 650 students, over 25% of whom have disabilities.

Impressions

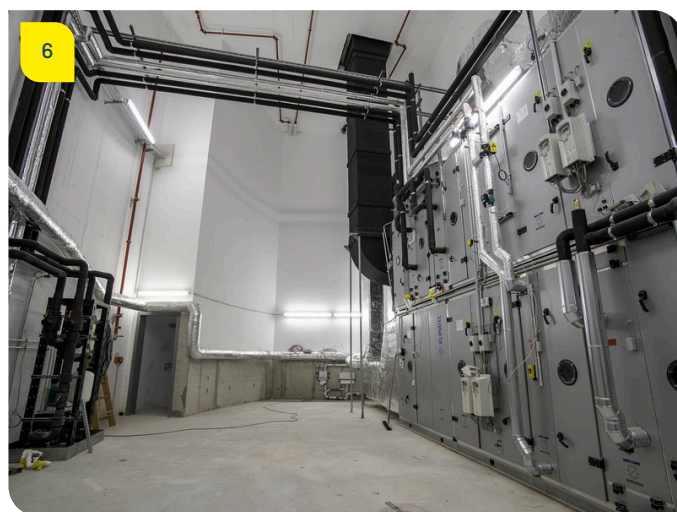
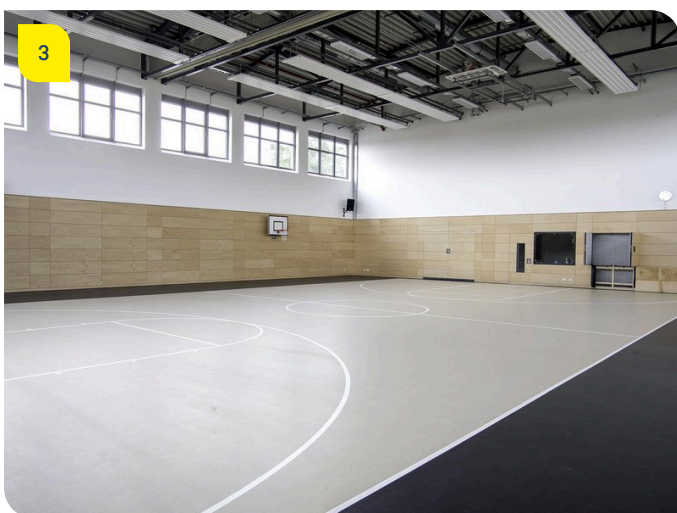
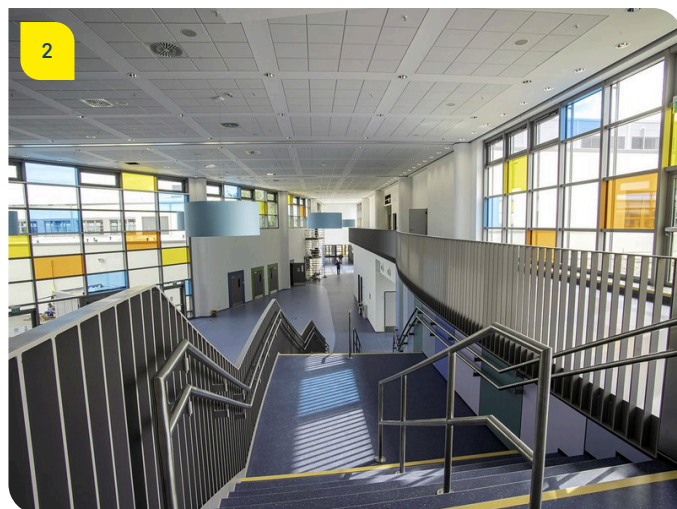
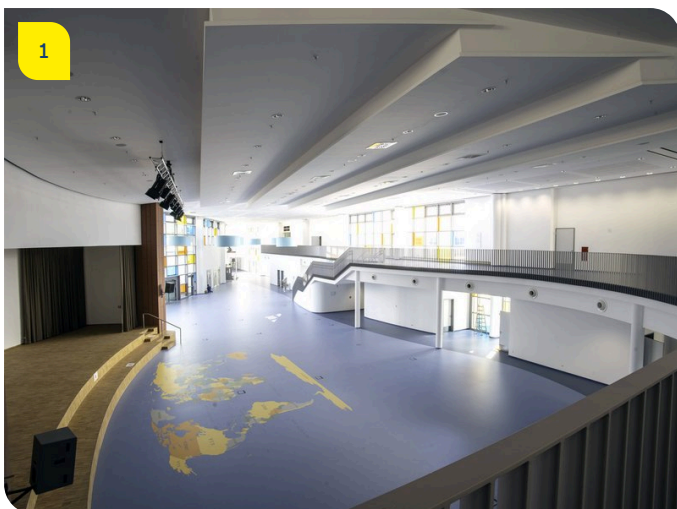


Image notes

1

Information and learning wherever you go.

2

Bright, welcoming spaces.

Learning tools, such as a world map or numbers, are integrated into the floors at various points.

Daylight floods the inside of the building from big coloured windows.

3 All-purpose sports hall.

The students enjoy the use of a large sports hall.

4 Safety first.

For this project, BBGS worked with the client to decide on a monolithic reinforced concrete structure and special triple glazing.

5 Green school grounds.

Underground buffer systems collect rainwater, which is used to irrigate the green spaces.

6 Behind the scenes.

The installed technology also meets all the requirements of the US school-building programme.

Do you have questions about the project or would you like to learn more? Feel free to contact us for further information.

PORR AG Group Communications

Absberggasse 47

1100 Wien

T +43 50 626-0

E-Mail: comms@porr-group.com