



Berlin

A 100, Los 11a

Data and facts

Company	PORR Verkehrswegebau GmbH
Type	Highway
Runtime	10.2009 - 12.2024
Principal	Local Government Department for Urban Development

[Project report online](#)

www.porr-group.com



Expansion of the Berlin ring road

The main artery in Berlin's road network

The A100 federal motorway is one of the main arteries for Berlin's long-distance, regional and urban road network. With the 16th construction phase, it will be extended by another 3.2 km long section. This section runs from the Neukölln motorway junction to the Am Treptower Park junction. In this way, the eastern districts of Berlin will be better connected to the central ring road and the A113, and long-distance connections will also be improved. The development of the engineering structures handed over includes the construction of a complex drainage system, the base courses made of concrete and unbound natural rock, as well as the construction of the carriageway in asphalt construction in open cut (trough construction) and in the tunnel area.

Logistical requirements demand precise coordination

Restricted access to the construction site and a continuous, up to 2 m high paving of the central strip made of in-situ concrete place high demands on the logistical planning of the project. The resulting complex construction sequences and logistical as well as runtime challenges are solved by the construction site team with precision and shoulder to shoulder.

Further construction sections of the A100 for PORR Verkehrswegebau

At the beginning of 2022, work started on the first asphalt sections Lot 11a, while the first asphalt application in the "Grenzallee" tunnel was realised in April 2023. But that's not all: since March 2023, the traffic route construction team has also been building the emergency walkways as reinforced concrete caps with air-entrained concrete. The following construction phases concern the connection of the new section to the Neukölln motorway junction and the connection to the Am Treptower Park junction. PORR is building in a familiar environment: the trough structure Lot 5 has already been built by PORR structural engineering and a further section with the lot 6 is currently being produced.

Impressions

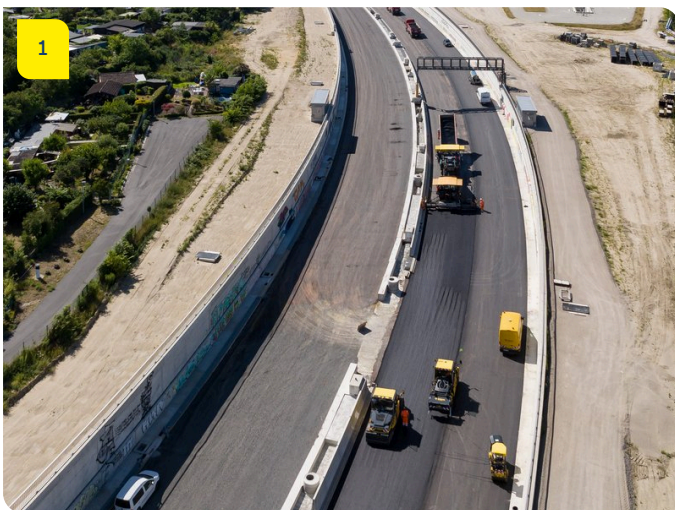


Image notes

1

A100, Berlin

With the 16th construction section, the A100 grows by another 3.2 km long section.

Do you have questions about the project or would you like to learn more? Feel free to contact us for further information.

PORR AG Group Communications

Absberggasse 47

1100 Wien

T +43 50 626-0

E-Mail: comms@porr-group.com