



A46 federal motorway between Bestwig junction and Nuttlar

Data and facts

Company	PORR Spezialtiefbau GmbH
Type	Rehabilitation
Runtime	05.2015 - 08.2016
Principal	Gebr. Schmidt

[Project report online](#)

www.porr-group.com



Securing a slope near the Sengenbergl in Bestwig

A 20cm-thick reinforced jetcrete lining was applied to the embankments to protect the rock against weathering and prevent it coming loose, and also to protect the nail heads against corrosion.

Pressure relief holes were also drilled in the jetcrete lining to prevent the build-up of pressing water behind the lining. These perforations were drilled in a 1.00m x 1.00m grid. The precipitation water seeping onto the berms will be collected in 5m-long drainage boreholes. In addition, the embankments feature 35m-long drainage boreholes at horizontal intervals of 10m in order to lower the water table in the slope.

One of the most significant challenges in linear construction sites such as this is the logistics of material movements and ensuring access routes to the site. Due to the constant earthworks and removal of rubble from the site, new access routes had to be set up on numerous occasions.

Impressions

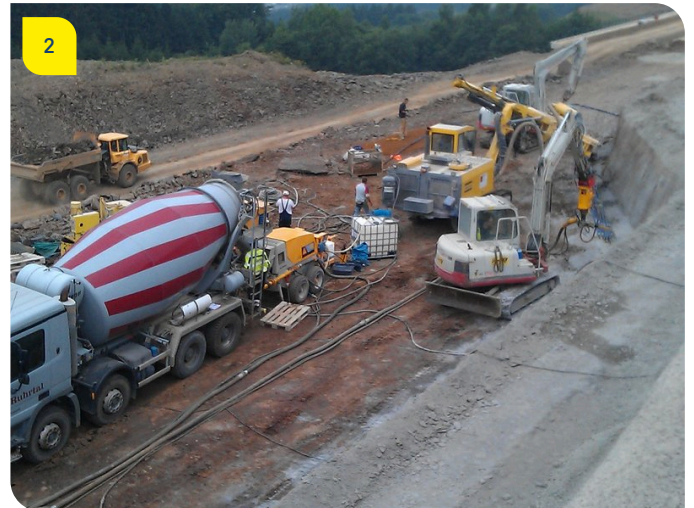


Image notes

1

A46, section from Bestwig to Nuttlar, excavator with spraying unit

2

A46, section from Bestwig to Nuttlar, concrete spraying unit

Using jetcrete to fill in overbreakage caused by geological composition

Jetcrete construction site to secure the embankment in Bestwig

3

A46, section from Bestwig to Nuttlar, drilling rig

A drilling rig being used to drill 35m-long drainage boreholes to secure the slope beside the motorway.

Do you have questions about the project or would you like to learn more? Feel free to contact us for further information.

PORR AG Group Communications

Absberggasse 47

1100 Wien

T +43 50 626-0

E-Mail: comms@porr-group.com