



Bremerhaven

Rail transshipment facility

EUROGATE Container Terminal

Data and facts

Company	PORR Verkehrswegebau GmbH
Type	Industrial construction, industrial area
Runtime	02.2024 - 04.2025
Principal	EUROGATE KV-Anlage Bremerhaven GmbH

[Project report online](#)

www.porr-group.com



PORR Transport Route Engineering delivers quality and sustainability for new railway infrastructure

PORR transport route engineering redesigns track environment

PORR transport route engineering GmbH has been part of the project since March 2024. On behalf of EUROGATE KV-Anlage Bremerhaven GmbH, the team from Osnabrück took on the construction of the areas to the right and left of the new track system. The work included the dismantling of around 38,000 m² of asphalt surfaces, including the underlying base layers and drainage systems, as well as the installation of new supply lines and slot channels over a length of approximately 780 metres. This was followed by the installation of around 40,000 m² of asphalt and gravel base course.

Low-temperature asphalt and precise execution

Particular attention was paid to sustainability and quality: the asphalt was laid at a low temperature, significantly reducing energy consumption and emissions. Viscosity-modified, polymer-modified bitumen was used, which not only minimised the environmental impact but also improved health and safety on the construction site. The quality requirements for the superstructure, particularly with regard to evenness, profile-compliant positioning and void content, were extremely high. The PORR central laboratory in Münster monitored the entire asphalt installation process and supported the self-monitoring of the earthworks as well as the gravel base course.

Complex construction site logistics successfully mastered

The construction site was located in a customs-free zone, which entailed special logistical requirements. Precise coordination with parallel work such as track and crane construction as well as adjacent building construction projects was essential in order to avoid obstructions and not disrupt regular port operations. Thanks to the close cooperation of all those involved in the project, the Osnabrück branch was able to call on the support of other asphalt crews when schedules overlapped.

Signal for the future

The successful commissioning of the new rail transshipment facility marks a significant milestone for Bremerhaven. The project not only represents technical excellence, but also the consistent implementation of sustainable construction methods. It is a strong signal of Bremerhaven's determination to continue to play a central role in international container traffic in the future.

Impressions

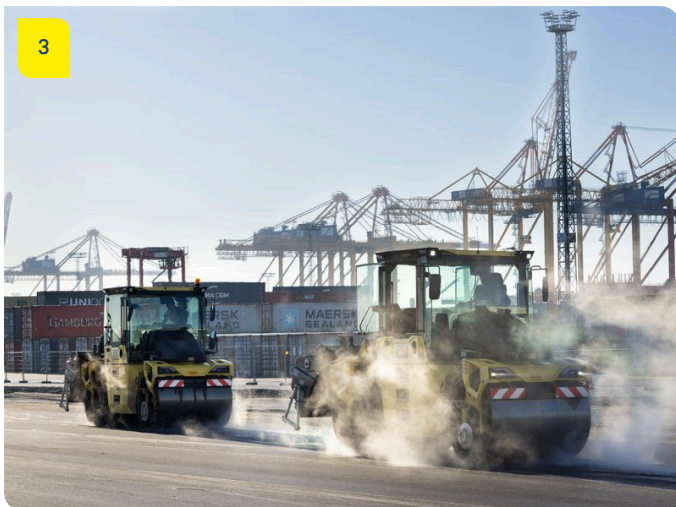
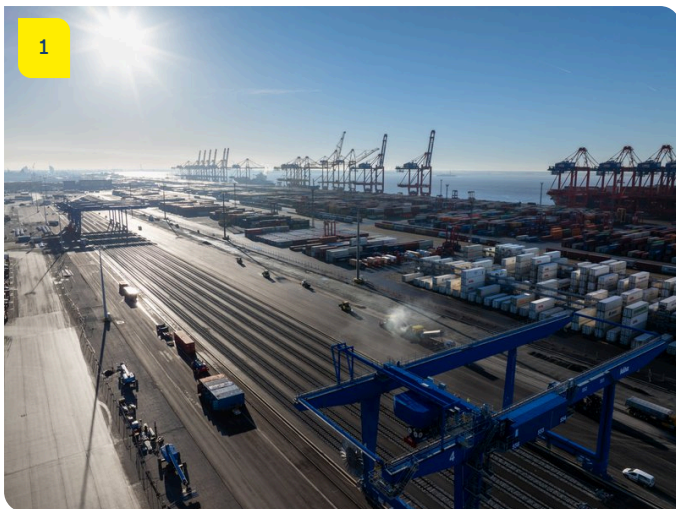


Image notes

1

A state-of-the-art rail transshipment facility was completed at the EUROGATE Container Terminal Bremerhaven by April 2025.

3

The successful commissioning of the new rail transshipment facility marked a significant milestone for Bremerhaven.

2

Particular attention was paid to sustainability and quality.

Do you have questions about the project or would you like to learn more? Feel free to contact us for further information.

PORR AG Group Communications
Absberggasse 47
1100 Wien

T +43 50 626-0

E-Mail: comms@porr-group.com