



Mainz

B&B-Hotel Mainz-Hbf

Data and facts

Company	PORR Hochbau West GmbH
Type	Hotels
Runtime	02.2016 - 01.2017
Principal	B&B Hotels

[Project report online](#)

www.porr-group.com



"Check in, relax, and save" – New construction of Mainz’ second B&B Hotel

The high demand in the state capital of Mainz thus prompted B&B Hotels to open a second hotel here as well. In its role as general contractor, PORR constructed the new building for this hotel on the old freight station site near the main railway station as a turnkey project.

The contract included the functional construction of the hotel building with an area of 3,569m² across seven floors and the outdoor facilities with 50 parking spaces.

The finished hotel now features 119 guest rooms. One of the rooms is wheelchair-accessible and 24 have been upgraded to family rooms.

Owing to the challenging soil conditions, the hotel, which has no basement, was set directly on a foundation of 85 ductile driven cast in-situ (DCIS) piles. The construction essentially consists of triple walls and filigree slabs with a trowelled finish.

Construction output in figures

3.569m ²	gross floor area
11.117m ³	gross cubic capacity

Impressions

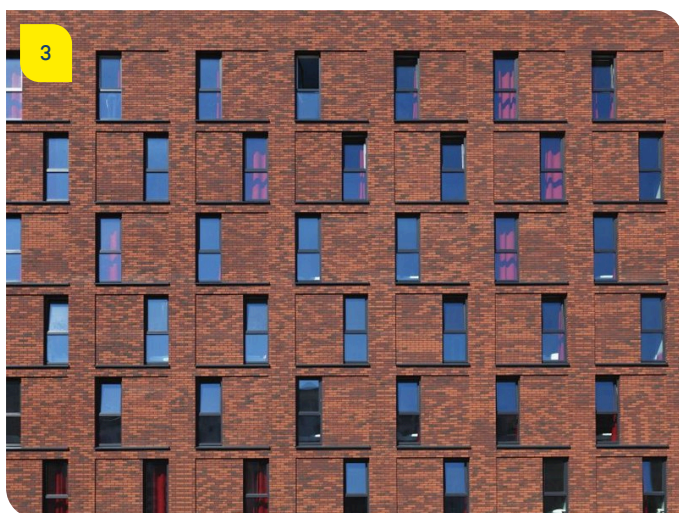
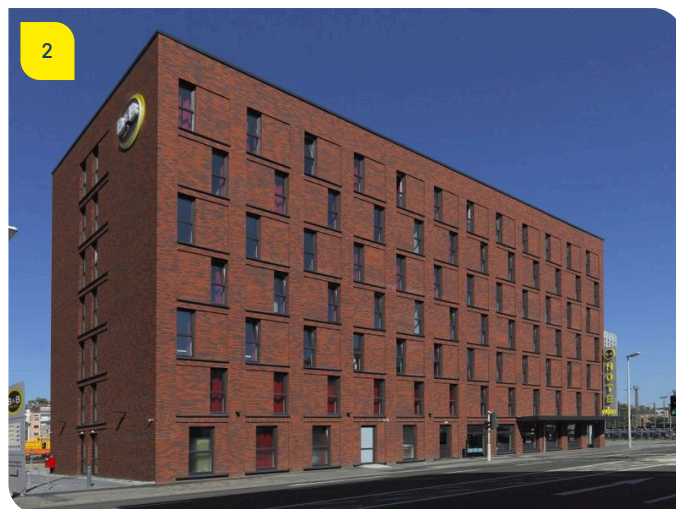


Image notes

1

B&B Hotel main station, Mainz

The new B&B Hotel offers 119 guest rooms and is located close to the railway station.

2

B&B Hotel main station, Mainz

The cuboid hotel building extends over 7 floors.

3

B&B Hotel main station, Mainz

The red brick façade with narrow, offset, floor-to-ceiling windows.

Do you have questions about the project or would you like to learn more? Feel free to contact us for further information.

PORR AG Group Communications

Absberggasse 47

1100 Wien

T +43 50 626-0

E-Mail: comms@porr-group.com