



Campus Tower Hamburg HafenCity

Data and facts

Company	PORR Spezialtiefbau GmbH
Type	Turnkey construction pits, Foundations
Runtime	05.2016 - 10.2016
Principal	Garbe Campus Tower GmbH & Co. KG represented by Garbe Immobilien-Projekte GmbH

[Project report online](#)

www.porr-group.com



Campus Tower Hamburg HafenCity

A soldier pile shoring with back anchoring was constructed to the neighbouring buildings in the eastern section. A concrete seal was constructed in the lower section to separate the water-bearing layers. In the south-eastern section there is an old quay dating back to 1888, where sheet pile walls were pressed in to extend the seepage path from the harbour basin.

To the north, the bored pile walls had to be constructed with diagonal bracing against the base slab due to the tunnel of the U4 underground railway line located directly behind this section. For this reason, Hochtief Building began constructing the base parallel to the excavation in order to create the stiffer supports.

The earth was then excavated between and under the stiffeners. The stiffeners were then removed after completion of the ceiling above the second basement floor.

Impressions

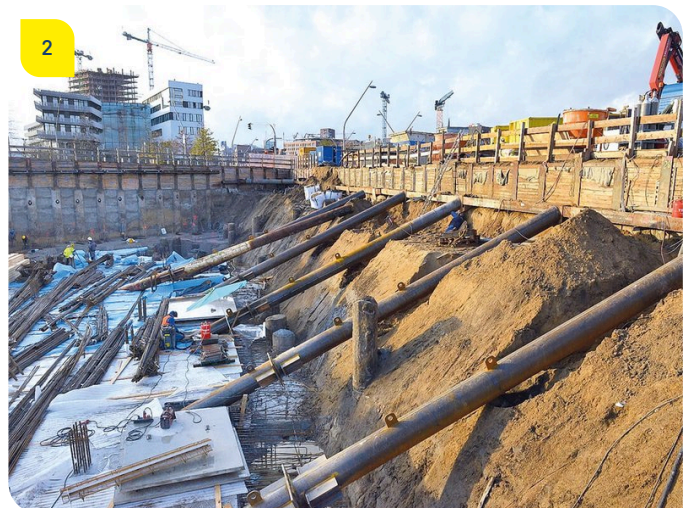


Image notes

1

Campus Tower Hamburg HafenCity

[Translate to English:] Different and in some cases unusual conditions at the property boundaries required four different systems to secure the pit.

2

Campus Tower Hamburg HafenCity

[Translate to English:] Different and in some cases unusual conditions at the property boundaries required four different systems to secure the pit.

Do you have questions about the project or would you like to learn more? Feel free to contact us for further information.

PORR AG Group Communications

Absberggasse 47

1100 Wien

T +43 50 626-0

E-Mail: comms@porr-group.com