



Central railway station, Frankfurt am Main

Data and facts

Company	PORR Spezialtiefbau GmbH
Type	Underpinning
Runtime	01.2019 - 12.2021
Principal	Franz Kassecker GmbH, Waldsassen

[Project report online](#)

www.porr-group.com

PORR

Jet-grouted underpinnings and floor slab for a cable duct tunnel

The roof construction of the railway station meant that individual foundation elements already carried significant loads, so these underpinning works had to be completed as nearly as possible without settlement. In places, jet grouted floor slabs had to be manufactured in the soil to provide reciprocal buttressing for the underpinning body.

Complex construction site logistics solutions

Electrically powered machines were only able to reach the ground surface after the first 400m. Outstanding close collaboration between all the companies involved with the site made it possible to overcome the complex logistics of this project. The extremely limited space, aged buildings and lack of inventory documents for the railway station meant works had to be regularly and quickly adapted to the actual geometric situation.

Impressions

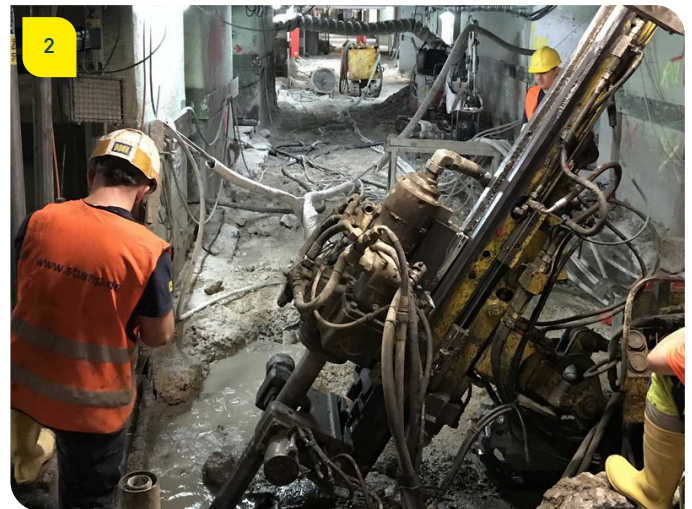


Image notes

1

Frankfurt, central railway station

Jet grouting site facilities in front of the railway station.

2

The surface of the site could only be reached after 400 metres with electrically powered machines.

Do you have questions about the project or would you like to learn more? Feel free to contact us for further information.

PORR AG Group Communications

Absberggasse 47

1100 Wien

T +43 50 626-0

E-Mail: comms@porr-group.com