

# Berlin

## Construction pit at Rosenthaler Strasse

### Data and facts

---

**Company** PORR Spezialtiefbau Planung GmbH

---

**Type** Planning

---

**Runtime** 11.2018 - 02.2020

---

**Principal** PORR Spezialtiefbau GmbH

---

[Project report online](#)

[www.porr-group.com](http://www.porr-group.com)



# Saving of raw materials by planning optimization

## Business optimization during planning

In June 2018, PORR was assigned the contract for all work on the construction pit for the new building. Despite the existing on-site approval planning, PORR commissioned PORR Spezialtiefbau Planung GmbH to optimize on-site planning in order to achieve savings during implementation.

## Construction pit enclosure

Work on the construction pit enclosure included almost all the trades involved in specialist civil engineering. In the area of the boundaries without direct development and towards the street, free-standing soldier pile walls were planned on the upper meters. The walls were then secured more deeply with cast in-situ concrete diaphragm walls, supported with temporary anchors or corner reinforcements.

An anchored jet grouted underpinning will be used in the area of building no. 46. A jet grouted sealing base was used to seal the construction pit from below against the groundwater. In some areas of the later buildings, micropiles were planned to protect against buoyancy.

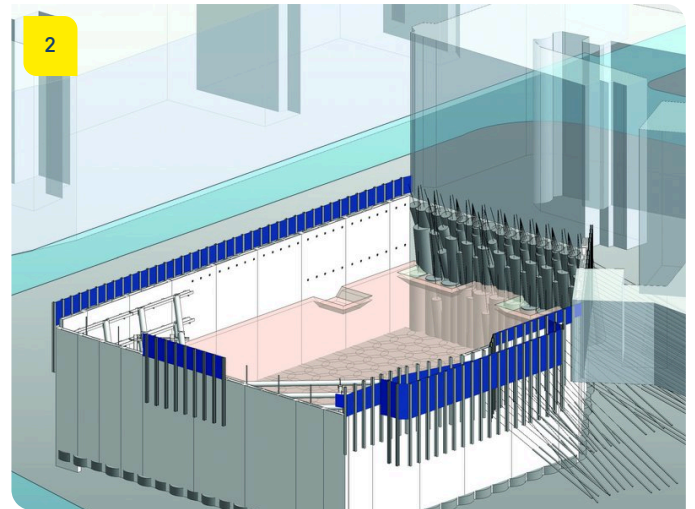
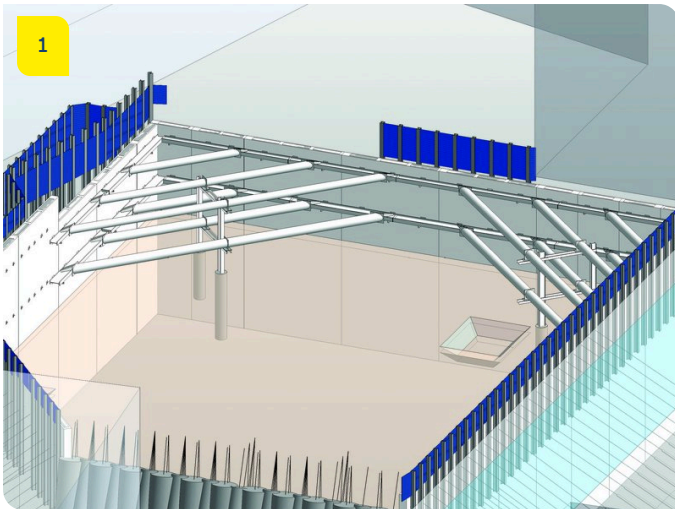
## Conclusion

Despite the existing, verified approval planning, PORR Spezialtiefbau Planung was able to save 10% on the required building materials.

## Optimised subsections:

- Soldier pile wall
- Reinforcing steel in the cast in-situ concrete diaphragm wall
- Steel reinforcement, two-layer
- Jet grouted sealing base

# Impressions



## Image notes

1

Construction pit at Rosenthaler Strasse in Berlin

Micropiles have been planned for uplift protection in some areas of the future buildings.

2

Construction pit at Rosenthaler Strasse in Berlin

An anchored DSV underpinning will be installed in the area of building no. 46.

3

Baugrube Rosenthalerstraße, Berlin

A residential and commercial building with 45 rental flats and twelve office units is being built at Rosenthaler Str. 43-45 in Berlin-Mitte.

Do you have questions about the project or would you like to learn more? Feel free to contact us for further information.

**PORR AG Group Communications**

Absberggasse 47

1100 Wien

T +43 50 626-0

E-Mail: [comms@porr-group.com](mailto:comms@porr-group.com)