



# Security at the Deutsches Museum in Munich

## Deutsches Museum

### Data and facts

Company	PORR Spezialtiefbau GmbH, PORR Spezialtiefbau Planung GmbH
Type	Underpinning, Foundations
Runtime	04.2025 - 01.2028
Principal	Deutsches Museum

[Project report online](#)

[www.porr-group.com](http://www.porr-group.com)



# PORR special civil engineering secures the Deutsches Museum in Munich

## Deep foundations with responsibility

As part of the modernisation, PORR special civil engineering was commissioned to carry out underpinning and deep foundations as early as 2024. The work was carried out in the first construction phase in accordance with the criteria of the German Sustainable Building Council (DGNB).

The rehabilitation placed high demands on those involved: confined space, low ceilings, work in groundwater on the Isar river and the protection of listed buildings. To create the construction pits for the utility and technical ducts, the PORR Spezialtiefbau team used the jet grouting method (DSV) to secure the sides and perform underpinning on existing foundations. A total of around 1,200 m<sup>3</sup> of DSV structures as well as 108 micro piles with lengths of up to 15 metres and diameters of 200 to 250 mm were installed. The low-noise and low-vibration construction was a decisive benefit in the sensitive existing building. Thanks to modular steel support elements that were connected on site, a secure foundation was guaranteed even at low working heights. Micro piles are again being used in the second construction phase, which is currently underway.

## Seamless interaction between different service areas

PORR Equipment Services supplied the compact drilling rigs, which are characterised by their high performance and minimal space requirements – ideal for the cramped conditions on the construction site. The team at the Colbitz site manufactured the precisely fitting steel support elements, which were designed to meet the requirements of the historic existing building.

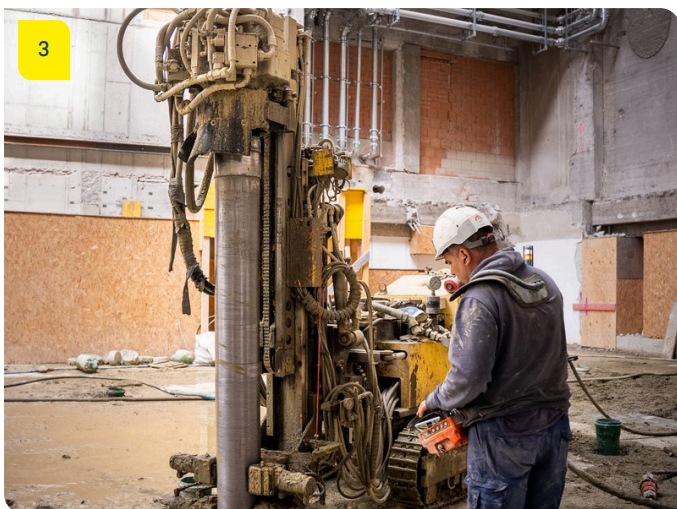
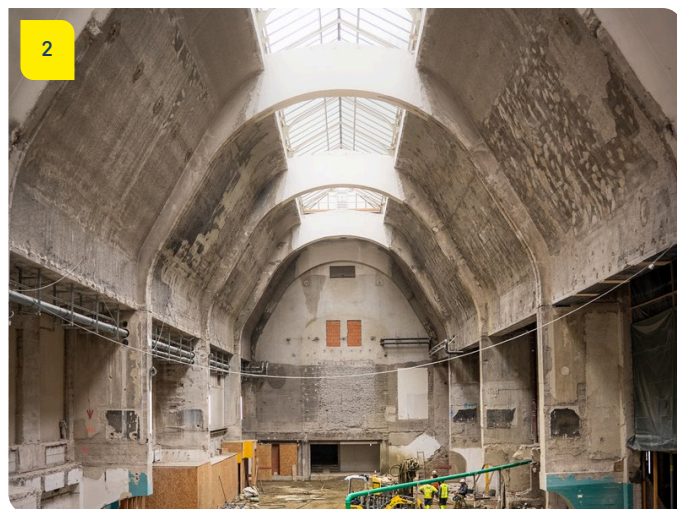
At the same time, colleagues from the special civil engineering planning department took on the coordination of the execution. They coordinated the processes and ensured that everything was implemented on schedule.

## Sustainability as a benchmark

The first construction phase of the modernisation project received the DGNB's 'Sustainable Construction Site in Special Civil Engineering' award. The assessment covered construction site organisation, resource conservation, health protection and construction quality. A special highlight: the injection binder used in the DSV columns contains biochar, which binds CO<sub>2</sub> and reduces the ecological footprint of the construction site. Electrical appliances ensured low-emission working conditions, and hydraulic drives operated with biodegradable oil.



# Impressions



## Image notes

1

PORR special civil engineering secures the Deutsches Museum in Munich

2

3

PORR Equipment Services supplied the compact drilling rigs, which are characterized by their high performance and minimal space requirements.

5

Zukunft trifft Geschichte.

As part of the modernization, PORR special civil engineering was commissioned to carry out underpinning and deep foundations as early as 2024.

4

The first phase of the modernization project received the DGNB's "Sustainable Construction Site in Special Civil Engineering" award.

Do you have questions about the project or would you like to learn more? Feel free to contact us for further information.

**PORR AG Group Communications**

Absberggasse 47

1100 Wien

T +43 50 626-0

E-Mail: [comms@porr-group.com](mailto:comms@porr-group.com)