



# DRK Clinics Berlin, Westend

## Data and facts

Company	PORR Spezialtiefbau GmbH
Type	Underpinning
Runtime	10.2022 - 11.2022
Principal	Wolfgang Bauer Ingenieurbau GmbH, Mühlenbeck

[Project report online](#)

[www.porr-group.com](http://www.porr-group.com)





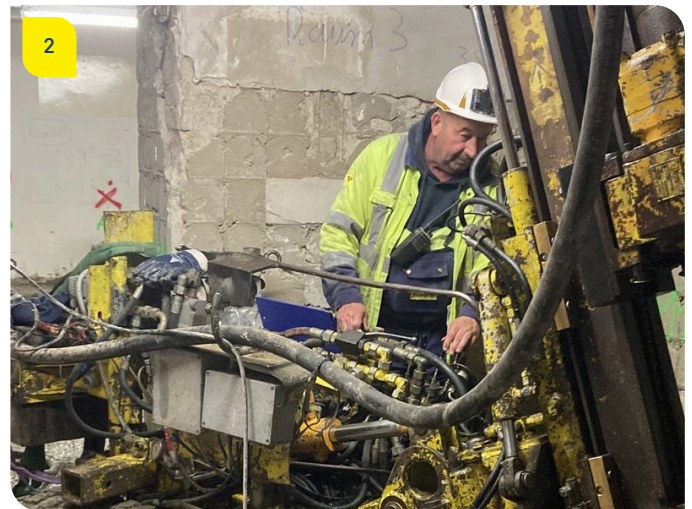
# Construction under cramped conditions and during ongoing operations

With the jet-grouting method, cylindrical jet grouted elements are produced in several passes from the lowest point of the borehole to the bottom of the existing foundation in what is known as a “pilgrim step” cycle (e.g. produce one element, skip three, etc.). The soil is “milled” with a rotating jet of cement slurry, and the soil surrounding the nozzle is incorporated into the jet grouted element as an aggregate. The resulting area is liquid at first, but the walls are supported by the slurry. After hardening, the grid is compacted one element at a time and a quasi-continuous new foundation body is produced underneath the existing one.

## Large parts of the historic hospital complex are listed buildings

The DRK Kliniken Berlin Westend began as the municipal hospital of the town of Charlottenburg, which was independent from the rest of Berlin until 1921. Opened in 1904, the pavilion complex with its striking brick buildings in the neo-Renaissance style has been largely preserved to this day and, like the gardens, many parts of it are classified as historical monuments. The only prominent new building is the Head Clinic, built in 1971. In spite of the requirements that apply to listed buildings, the complex has performed a successful architectural balancing act between tradition and innovation for many years. The buildings are regularly remodelled and adapted to the requirements of modern medicine and nursing.

## Impressions



# Image notes

1

DRK Clinics, Berlin-Westend

The underpinning work had to be carried out under cramped conditions in the basement while the clinic and delivery rooms on the floors above remained in operation.

3

DRK Clinics, Berlin-Westend

The DRK Kliniken Berlin Westend began as the municipal hospital of the town of Charlottenburg, which was an independent municipality until 1921.

2

DRK Clinics, Berlin-Westend

Reliability and economic efficiency of the execution were key priorities for the employer. The team was able to meet the client's requirements with a jet grouted underpinning

Do you have questions about the project or would you like to learn more? Feel free to contact us for further information.

## PORR AG Group Communications

Absberggasse 47

1100 Wien

T +43 50 626-0

E-Mail: [comms@porr-group.com](mailto:comms@porr-group.com)