



# JOYN Services Apartments, Düsseldorf

## Data and facts

Company	PORR Hochbau West GmbH
---------	------------------------

Type	Hotels
------	--------

Runtime	01.2019 - 08.2021
---------	-------------------

Principal	King PropCo S.à.r.l
-----------	---------------------

[Project report online](#)

[www.porr-group.com](http://www.porr-group.com)



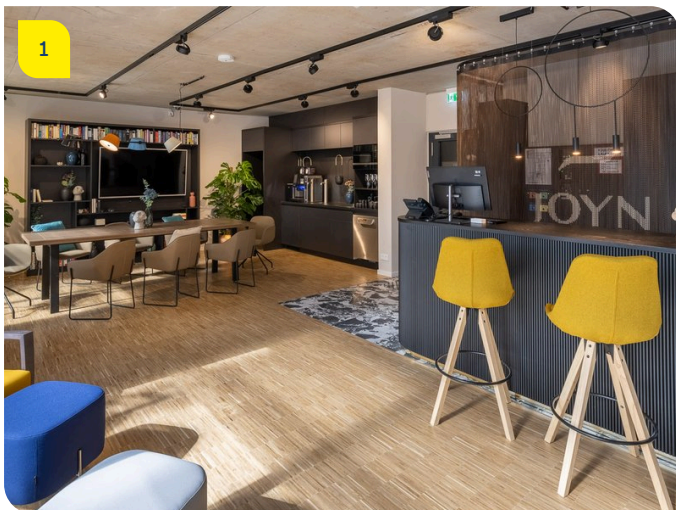
# A temporary home in the heart of the city

Despite the hotel's central position, the immediate surroundings are characterised by an air of peace and tranquillity. That's why some of our guests prefer to finish off a busy day relaxing on one of the hotel's comfortable lounges, rather than out at bar. The common areas at the JOYN include the roof terrace, green inner courtyard, community space and fitness area – all the options you need to relax, work, network or make some new friends. The interior architecture of the building is more reminiscent of a co-working space than a hotel, creating the perfect urban living vibe.

## Static reinforcement of the existing building

Before the construction site could be approved, the site had to be thoroughly examined for contaminants. The load-bearing capacity of those structural elements deemed worth retaining had to be rigorously checked. At the start of the renovation process, it became clear that additional measures would be required to statically reinforce the building. The columns and walls of the plinth area in the underground parking garage were found to have unacceptably high chloride levels, with the contaminant deeply embedded in the concrete. As a result, reinforcement in some areas no longer exhibited the necessary resistance to corrosion. The affected sections had to be removed and replaced. In addition to the expected need to update fire protection features, the concrete ceilings of the rear building also required reinforcement as their load-bearing capacity was not sufficient.

## Impressions



## Image notes

1

JOYN Services Apartments, Düsseldorf

The modern interior design ensures an urban lifestyle.

2

JOYN Services Apartments, Düsseldorf

A textured, grey clinker brick façade welcomes guests to the JOYN Aparthotel on Düsseldorf's Stresemannstrasse with a striking play of shadows.

Do you have questions about the project or would you like to learn more? Feel free to contact us for further information.

**PORR AG Group Communications**

Absberggasse 47

1100 Wien

T +43 50 626-0

E-Mail: [comms@porr-group.com](mailto:comms@porr-group.com)