



LNG-Terminal, Brunsbüttel

Data and facts

Company	PORR Spezialtiefbau GmbH
Type	Foundations
Runtime	09.2024 - 03.2026
Principal	German LNG Terminal GmbH

[Project report online](#)

www.porr-group.com



Foundation work with low-noise and vibration-free pile system

Watch our project video* :

- [PORR Germany . LNG-Terminal, fundex pile](#)

In addition, strict regulations against fire and flying sparks apply. To avoid sparks, reinforcement cages were cut electro-hydraulically instead of being burned.

Efficient logistics and sustainability

With eight drilling rigs in operation, the daily demand for reinforcement cages was extremely high. Three suppliers delivered 2-3 truckloads of reinforcement cages to the construction site every day. The concrete was delivered directly from Brunsbüttel to minimise transport distances and to be able to react flexibly to demand. Sustainability was also a central aspect: hazardous substances were stored safely, drips were collected during refuelling, and oil binders were available for emergencies. These measures are based on a specially developed checklist by the PORR special civil engineering team, which systematically analyses environmental aspects.

Successful load tests

‘We have already impressed with our expertise and experience from the previous contract at the LNG terminal in Stade. Particularly noteworthy is our technical solution with a low-noise and vibration-free pile system that does not extract soil,’ explains PORR project manager Martin Puchler.

Trial loads carried out in summer 2024 further optimised the technical and economic implementation of the project. With a low-noise and vibration-free pile system, experienced teams and a clear focus on environmental awareness, the project set new standards in energy supply.

‘Our team was motivated and showed above-average commitment every day. By optimising and combining processes with our joint venture partner, we were able to exceed the planned daily output,’ says Puchler happily.

(*video platform Vimeo)

Impressions

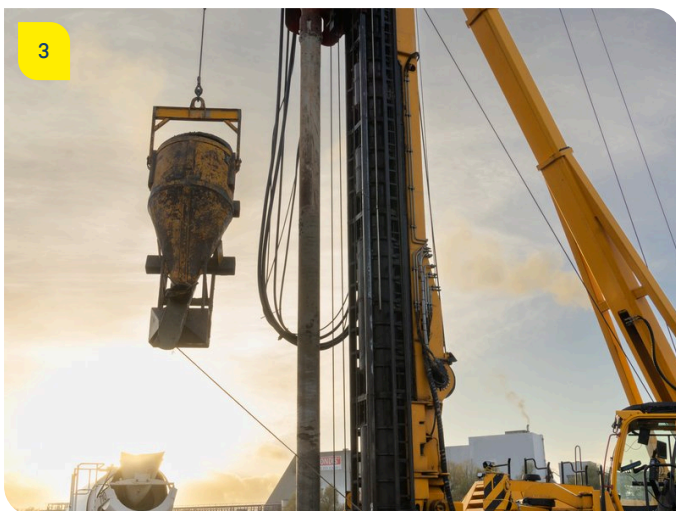
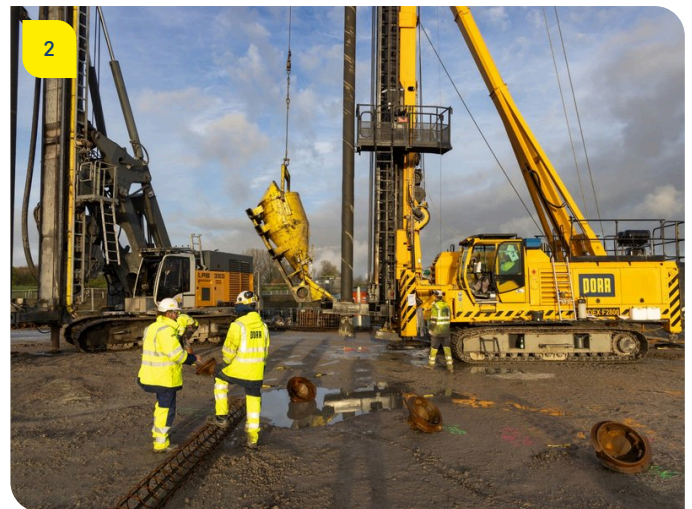


Image notes

1

LNG-Terminal, Brunsbüttel

The LNG terminal in Brunsbüttel is to enable the import of liquefied natural gas from 2027 and later of hydrogen derivatives. A central component of the project is the construction of two LNG tanks.

2

LNG-Terminal, Brunsbüttel

PORR special civil engineering, together with König GmbH, carried out the deep foundations. A total of approx. 5,650 Fundex piles with a diameter of 44/56 cm and a length of around 23 metres were used.

3

LNG-Terminal, Brunsbüttel

The concrete used comes directly from Brunsbüttel, minimising transport distances and contributing to sustainable construction.

Do you have questions about the project or would you like to learn more? Feel free to contact us for further information.

PORR AG Group Communications

Absberggasse 47

1100 Wien

T +43 50 626-0

E-Mail: comms@porr-group.com