



## Pile foundation for motorway cover (First BA), Hamburg

### Data and facts

---

**Company** PORR Spezialtiefbau GmbH

---

**Type** Foundations

---

**Runtime** 02.2017 - 07.2017

---

**Principal** DEGES

---

[Project report online](#)

[www.porr-group.com](http://www.porr-group.com)



# Pile production with flowing traffic on the A7

## Special challenge due to construction site location

Construction site logistics and occupational safety posed a particular challenge during construction. In addition to the construction site traffic, the activities of other trades and subcontractors also had to be taken into account on the closed carriageway. However, motorway traffic with a distance of just two metres in front of the equipment was also not a daily occurrence. In July 2017, work on the northbound carriageway was completed on time and without any accidents.

Some large bored piles were installed at a limited working height due to a culvert and an existing bridge.

## Services 1st construction phase:

---

1,300 Partial displacement bored piles       $d = 78 \text{ cm}$ ,  $N_d \leq 2,811 \text{ kN}$ ,  $L \leq 14.0 \text{ m}$

---

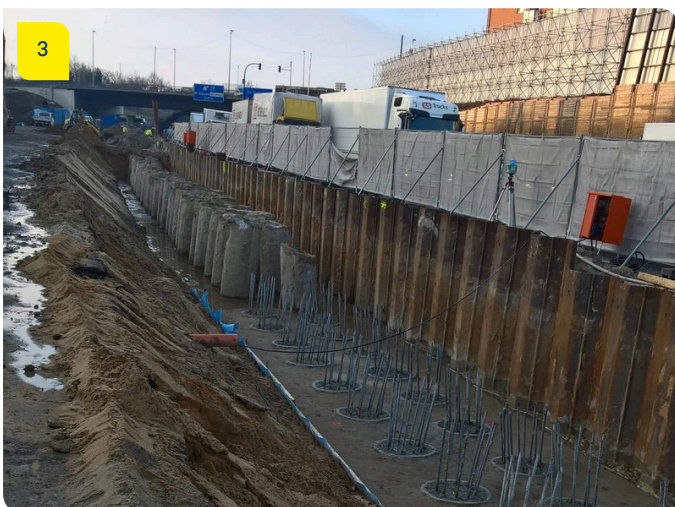
7 static test loads

---

37 large bored piles       $d = 120 \text{ cm}$ ,  $L \leq 8.0 \text{ m}$

---

## Impressions



## Image notes

1

Pile foundation on the A7 near Hamburg

The pile foundation methods are carried out only a few metres from the running traffic.

3

Pile foundation on the A7 near Hamburg

Covered and uncovered VB pile heads.

2

Pile foundation on the A7 near Hamburg

The last VB pile before the "Kieler Straße" bridge.

Do you have questions about the project or would you like to learn more? Feel free to contact us for further information.

**PORR AG Group Communications**

Absberggasse 47

1100 Wien

T +43 50 626-0

E-Mail: [comms@porr-group.com](mailto:comms@porr-group.com)