

Port of Straubing Sand, Straubing

Data and facts

Company	Stump-Franki Spezialtiefbau GmbH
---------	----------------------------------

Type	Foundations
------	-------------

Runtime	09.2022 - 10.2023
---------	-------------------

Principal	Straubing-Sand Port Association
-----------	---------------------------------

Project report online

www.porr-group.com



Permanent anchors secure the statics of the sheet pile walls

The additional anchor layer consists of 1076 grouted permanent anchors spaced at 1.0 m intervals. The lengths vary between about 18.50 m and 29 m, the anchor steel diameters are 40 mm, 50 mm and 63.5 mm. As the anchor heads are each located in the sheet pile valley, waling is not required.

High demands on nature conservation and deadline security

In order to disrupt port operations as little as possible, the anchors were produced exclusively from a 42 x 12 m work pontoon. The required material was lifted by crane from an intermediate storage area on land onto a supply pontoon, which was then moved next to the work pontoon. In order to guarantee deadlines and to achieve a high daily output, work was carried out in two shifts at times. The requirements for environmental protection and nature conservation as well as timely completion are also high. For example, no substances are allowed to get into the Danube water. The drilling material is collected in rubble troughs, brought ashore by supply pontoon and disposed of properly. As the harbour area is partly located in a bird sanctuary, the noise and sound-intensive work in these areas had to be completed by the beginning of the official breeding season on 1 March 2023.

Impressions

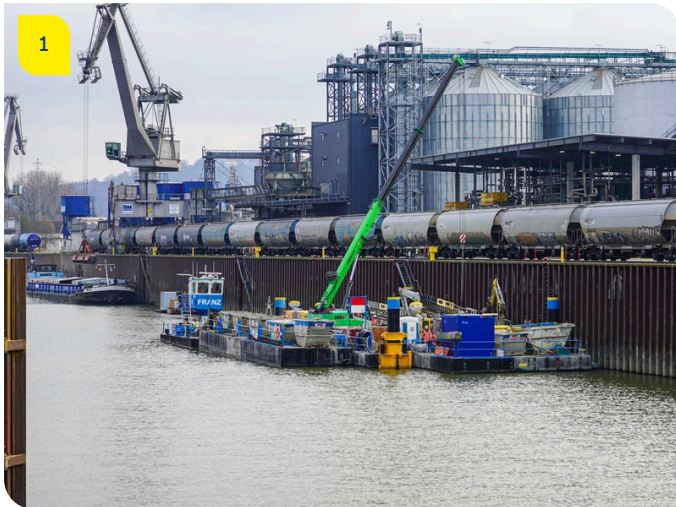


Image notes

1

Straubing Sand Harbour, Straubing

To minimise disruption to port operations, the anchors are made exclusively from a 42 x 12 m working pontoon.

2

Straubing Sand Harbour, Straubing

The drilling material is collected in rubble troughs, brought ashore with the supply pontoon and disposed of properly.

Do you have questions about the project or would you like to learn more? Feel free to contact us for further information.

PORR AG Group Communications

Absberggasse 47

1100 Wien

T +43 50 626-0

E-Mail: comms@porr-group.com