



Abraham Quarter, Oldenburg

Data and facts

Company	PORR Spezialtiefbau GmbH
Type	Foundations
Runtime	12.2021 - 04.2022
Principal	Zweite ANIMA-Oldenburg Projektgesellschaft mbH & Co. KG / VIVUM Services GmbH

[Project report online](#)

www.porr-group.com



Deep foundation for new residential and commercial building in Oldenburg's pedestrian zone

The cramped construction site was located in a pedestrian zone, making it difficult to deliver large drilling equipment, reinforcement cages, and ready-mixed concrete. Some of the piling was carried out right in front of existing buildings and required the utmost precision and care. Given the inner-city location, it was essential for the construction work to be quiet and vibration-free. Full displacement bored piles were the method of choice to reduce construction noise and minimise vibrations. The specialist civil engineering experts solved the task with flying colours and right on time thanks to comprehensive planning, a detailed logistics plan, and long-standing expertise.

Full displacement piles ensure a low carbon footprint

Full displacement piles have the advantage of completely displacing the soil during construction, thereby significantly improving the quality of the subsoil. No soil was extracted. This reduced the costs for the employer and cut back on the CO₂ emissions associated with transport and disposal journeys. Another advantage: full displacement bored piles can be used with smaller pile diameters than conventional bored piles, while maintaining the same load-bearing capacity. This saved large quantities of concrete and also contributed to reducing the carbon footprint.

Impressions

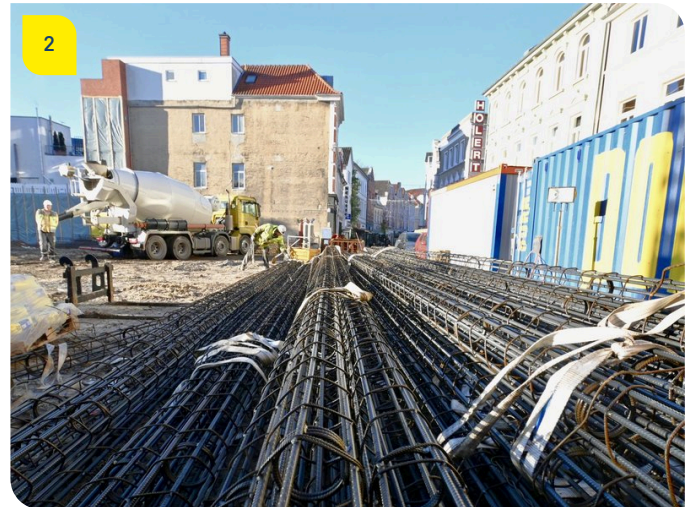


Image notes

1

Abraham Quarter, Oldenburg

Full displacement pile as a solution for the conditions of inner-city construction.

3

Abraham Quarter, Oldenburg

Some of the piles were installed directly in front of existing buildings and required the utmost precision and careful handling.

2

Abraham Quarter, Oldenburg

A total of 157 full displacement bored piles were used as deep foundation elements.

Do you have questions about the project or would you like to learn more? Feel free to contact us for further information.

PORR AG Group Communications

Absberggasse 47

1100 Wien

T +43 50 626-0

E-Mail: comms@porr-group.com