



SAPPHIRE by Daniel Libeskind, Berlin

Data and facts

Company

Type	Residential construction, Commercial building
------	---

Runtime	10.2014 - 03.2016
---------	-------------------

Principal	Chausseestraße 43 Entwicklungs GmbH
-----------	-------------------------------------

[Project report online](#)

www.porr-group.com



A unique gem of a residential building

All the flats in the project are grouped around a leafy inner courtyard. An Edeka supermarket is located on 1000m² of the ground floor. Floors one to six are occupied by owner-occupier flats, featuring two to three rooms each and ranging in size from 40m² to 110m². All the flats have their own balcony or terrace.

A top class architectural design project

The building is characterised by its buckled and pleated ceramic façade, a typical Libeskind feature, which is coated with a specially made metal powder. The building appears to change colour depending on how the light falls on it. The large, asymmetrical windows are a key feature of the design. They ensure that each flat receives maximum daylight.

Impressions

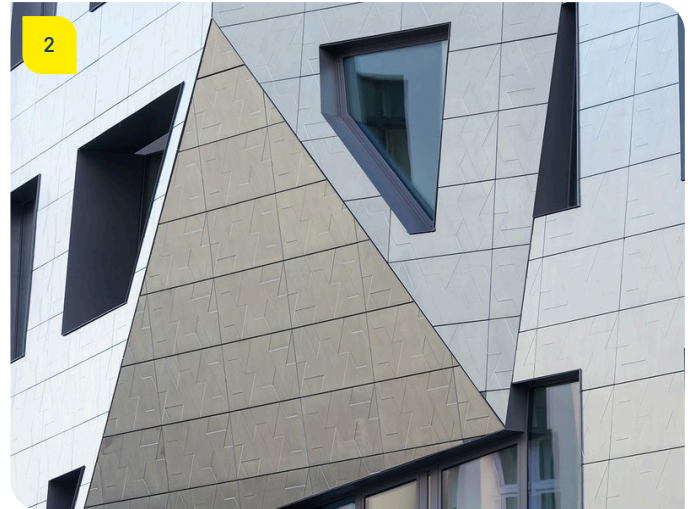


Image notes

1

SAPHIRE by Daniel Libeskind

The building's distinguishing feature is its 'Libeskindesque' buckled and folded ceramic façade.

2

SAPHIRE by Daniel Libeskind

The façade was coated with an extra manufactured metal powder. This makes the building appear different colours, depending on where the light falls.

Do you have questions about the project or would you like to learn more? Feel free to contact us for further information.

PORR AG Group Communications

Absberggasse 47

1100 Wien

T +43 50 626-0

E-Mail: comms@porr-group.com