



# Schöneweide combined heat and power (CHP) plant, Berlin

## Data and facts

Company	PORR Spezialtiefbau GmbH
Type	Foundations
Runtime	04.2021 - 09.2021
Principal	BTB Blockheizkraftwerks- Träger- und Betreibergesellschaft mbH Berlin

[Project report online](#)

[www.porr-group.com](http://www.porr-group.com)





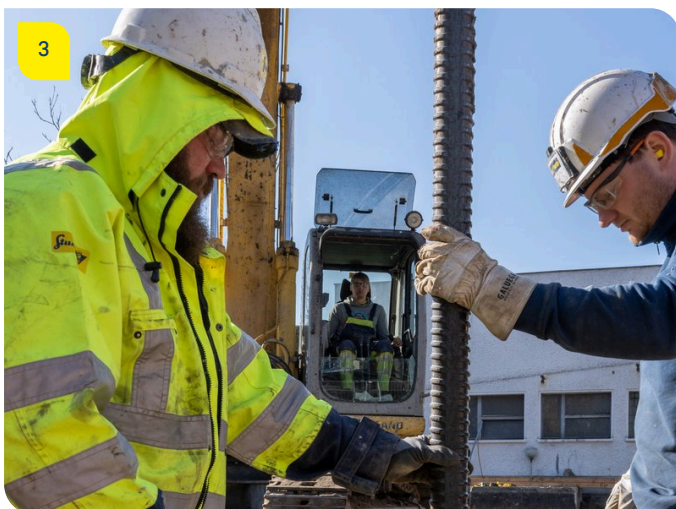
# PORR impresses with punctual, economical and safe execution

The subsoil in Schöneeweide consisted of loose, partially contaminated sand. The high-performance displacement piles had two further advantages. First, the subsoil was improved by full soil displacement. Second, there was no need to excavate potentially polluting soil material, thereby reducing disposal and transport costs and significantly reducing the project's carbon footprint.

## Creating a green district heating network

In the coming years, BTB GmbH Berlin, a combined heat and power plant operator, will invest several hundred million euros in a bigger and greener district heating network. The innovative water pump system in Schöneeweide will be one of the largest systems in Germany, capable of providing a flow temperature of 90 °C. With an estimated thermal output of around 7 MW in conjunction with four state-of-the-art CHP gas engines and a power-to-heat system, it will expand the existing BTB installations and help supply district heating to around 100,000 Berlin households in south-east Berlin. The plant's peak use time will be between spring and autumn, when the temperature of the Spree is sufficiently high.

## Impressions



## Image notes

1

Schöneeweide combined heat and power (CHP) plant, Berlin

PORR used its extremely economical and rapid pile foundation method with Stump high-performance displacement piles.

2

Schöneeweide combined heat and power (CHP) plant, Berlin

A total of 62 high-performance displacement piles with a diameter of 170mm and lengths of up to 10m were produced.

3

Schöneeweide combined heat and power (CHP) plant, Berlin

The use of high-performance displacement piles significantly reduced disposal and transport costs, and therefore also the project's carbon footprint.

Do you have questions about the project or would you like to learn more? Feel free to contact us for further information.

### **PORR AG Group Communications**

Absberggasse 47

1100 Wien

T +43 50 626-0

E-Mail: [comms@porr-group.com](mailto:comms@porr-group.com)