



Sloping piles for renovated quay wall, Hamburg

Data and facts

Company

Type

Rehabilitation

Runtime

04.2022 - 07.2023

Principal

Fr. Holst GmbH & Co. KG

[Project report online](#)

www.porr-group.com

PORR

Back anchoring with inclined piles for UNESCO World Heritage Site

which consists of a historic gravity wall as well as various partially renovated cross-sections, there was also repeated subsidence in the traffic area. The quay wall showed deformations, leaks and other typical signs of age. The renovation concept provides for the construction of a sheet pile walls with tiebacks as well as a solid reinforced concrete spar with a facing clinker shell.

Water-side work with many challenges

The work from the pontoon was determined by the tides, limited space and strict regulations on occupational safety and environmental protection. For example, the team had to wear life jackets during all work on the water. The floating platform served as both a working area and a storage area. Drilling material and flushing water were also temporarily stored here for proper disposal, as no foreign substances were allowed to get into the Elbe. A large cable crane transported the support links, weighing up to 1.8 t, to the borehole opening. The anchors were surrounded with protective pipes in the upper area to "bridge" the cavities behind the old sheet pile walls. The protective tubes are then filled with cement slurry. The later extension of the support link (to connect to the chord of the new sheet pile walls) also receives a protective tube. This is to protect the pile during the backfilling work (insertion of sand between the new and old sheet pile walls).

Impressions

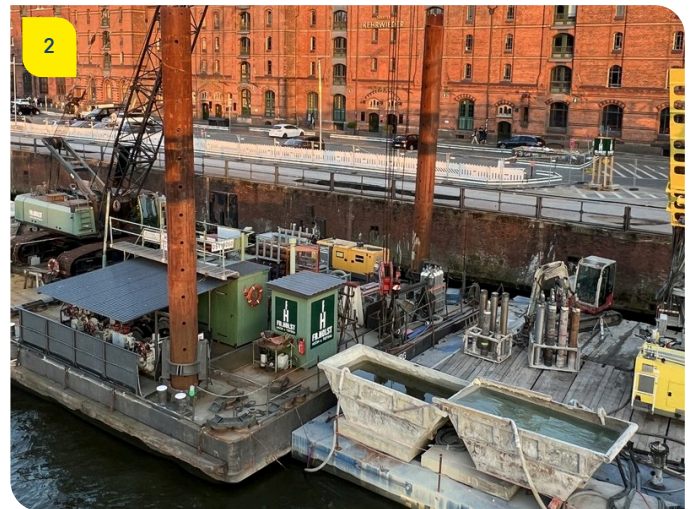
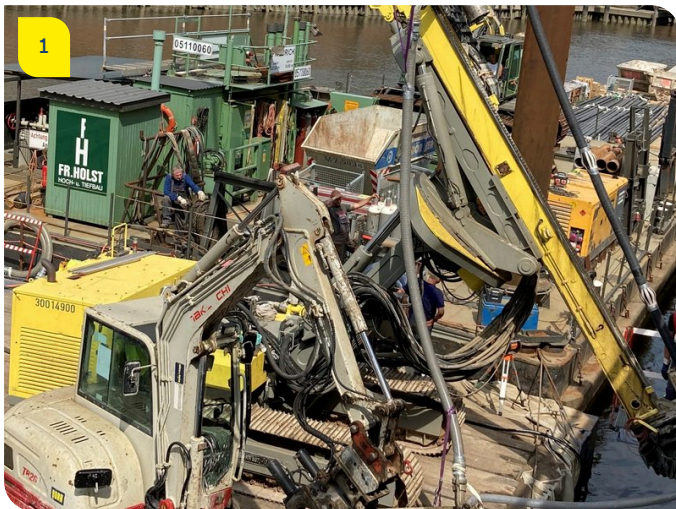


Image notes

1

Sloping piles for renovated quay wall, Hamburg

Drilling equipment on pontoon in the Zollkanal, a branch of the North Elbe.

2

Sloping piles for renovated quay wall, Hamburg

Pontoons with storage and working area in front of the historic buildings of Hamburg's Speicherstadt.

3

Sloping piles for renovated quay wall, Hamburg

Temporary storage of the prefabricated inclined piles from our own production in Colbitz.

Do you have questions about the project or would you like to learn more? Feel free to contact us for further information.

PORR AG Group Communications

Absberggasse 47

1100 Wien

T +43 50 626-0

E-Mail: comms@porr-group.com