



Stuttgart, S21 underground railway station

Data and facts

Company	PORR Spezialtiefbau GmbH
Type	Foundations
Runtime	01.2015 - 12.2020
Principal	Ed. Züblin AG, Stuttgart

[Project report online](#)

www.porr-group.com

PORR

The final ram stroke completing 2,000 Frankipfahl NG® piles.

The Frankipfahl NG® piles were therefore manufactured with enlarged bases for increased resistance. The enlarged base size allowed for control of the pile load bearing, rather than the length as with bored piles.

Quality assurance

The process of ramming out the pile base has a compacting effect, thus improving the subsoil. The ramming energy (number of blows per metre) was recorded to ensure that the condition of the soil was identified after each pile, so the quality of the foundation could be guaranteed.

Technical data / quantities

Frankipfahl NG® piles	2,000
Diameter / length	61cm / 12m
Required load NK	up to 8,000kN

Impressions

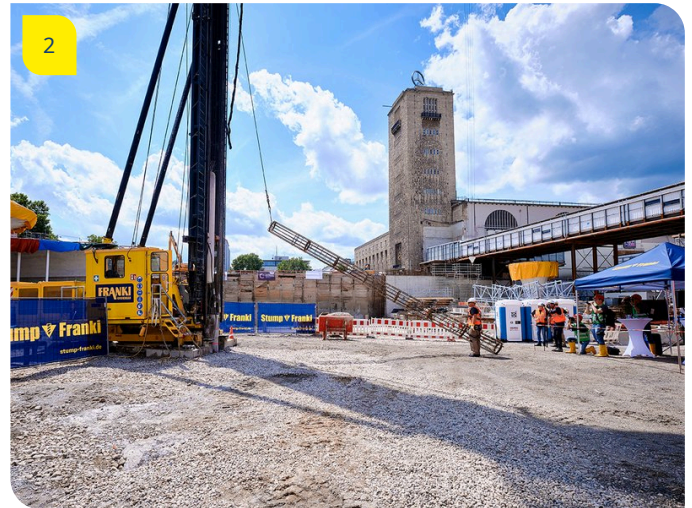


Image notes

1

Stuttgart, S21 underground railway station

2,000 Frankipfählen NG® for the Stuttgart 21 project.

2

Stuttgart, S21 underground railway station

Piles were loaded with up to almost 8,000 kN (800 tonnes) during pile test loads in a test field.

Do you have questions about the project or would you like to learn more? Feel free to contact us for further information.

PORR AG Group Communications

Absberggasse 47

1100 Wien

T +43 50 626-0

E-Mail: comms@porr-group.com