



Strengthening of the supporting structure, Strullendorf lock

Data and facts

Company	PÖRR Spezialtiefbau GmbH
Type	Rehabilitation
Runtime	04.2024 - 04.2024
Principal	RÖDL GmbH, Nürnberg (Bauherr: WNA Aschaffenburg)

[Project report online](#)

www.porr-group.com



Strengthening of the supporting structure on the Main-Danube Canal

Watch our project video* :



[PORR Deutschland . Lock, permanent anchor](#)

The big challenge was to place the drilling rig securely on the chamber wall without filling the trench or using a floating pontoon. In close cooperation with the client, RÖDL BAU.GRUPPE, which is implementing the measure on behalf of the Aschaffenburg Waterway Construction Office, a special construction made of precast concrete cubes, as well as a combination of steel girders and steel plates, was developed in advance. A risk assessment was prepared for this individually designed working level and the construction site team was instructed accordingly. 'During the site inspection, an employee of the consulting firm for occupational health and safety expressly praised the safety of the solution, as well as the good preparation and documentation,' says PORR project manager Benedikt Lohoff.

* (Videoplattform Vimeo)

Impressions

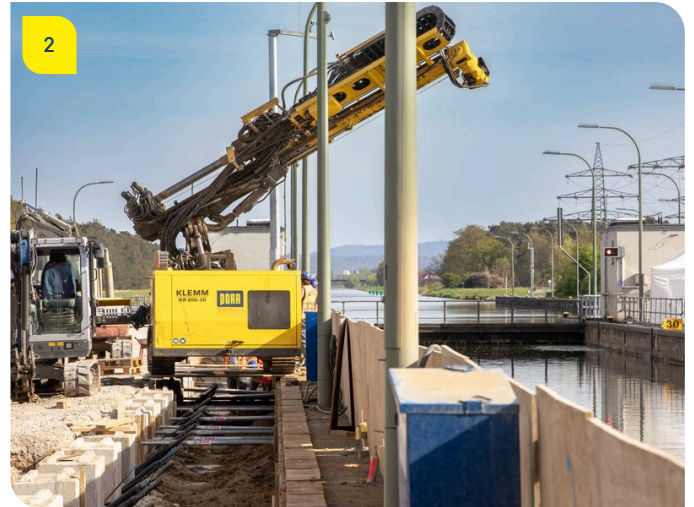


Image notes

1

Strengthening of the supporting structure, Strullendorf lock

The drilling rig was located directly at the lock basin.

2

Strengthening of the supporting structure, Strullendorf lock

The drilling rig is mounted on a special construction.

3

Strengthening of the supporting structure, Strullendorf lock

Single-rod permanent anchor with corrosion protection

Do you have questions about the project or would you like to learn more? Feel free to contact us for further information.

PORR AG Group Communications

Absberggasse 47

1100 Wien

T +43 50 626-0

E-Mail: comms@porr-group.com