



Closing the gap in the U5 and fitting out the station at Rotes Rathaus

Data and facts

Company	PORR GmbH & Co. KGaA
Type	Rail and road tunnels
Runtime	04.2016 - 12.2019
Principal	BVG represented by PRG U5

[Project report online](#)

www.porr-group.com



A monumental project comes to fruition

Adding ballast to prevent the tunnel from floating

Gutting the tunnel reduces its weight and disrupts the statics of the system. The tunnel structure had to be prevented from floating by all means, because this would weaken the cross-sections and increase the risk of cracks and water entering the tunnel. The team added ballast to the tunnel sections and used pressure-controlled presses when installing new and additional columns. The refurbishment was carried out in 1.5m wide sections using the pilgrim step method and was monitored by surveyors.

Fitting out the Rotes Rathaus underground station

The fit-out of the Rotes Rathaus station took place slightly later. Designed by Collignon Architecture and Design, the new station features striking mushroom columns and walls clad in light and dark terrazzo panels. Glazed intermediate levels provide transparency. The fit-out comprised both the public and non-public areas of the station on levels -1 to -3. In addition to the classic trades such as glazing, carpentry, metalwork, plastering and tiling, the technical facilities for the lifts, indoor ventilation, building automation, sanitary facilities, fire-fighting and underground train operations were also constructed under the direction of the Civil Engineering division.

Impressions

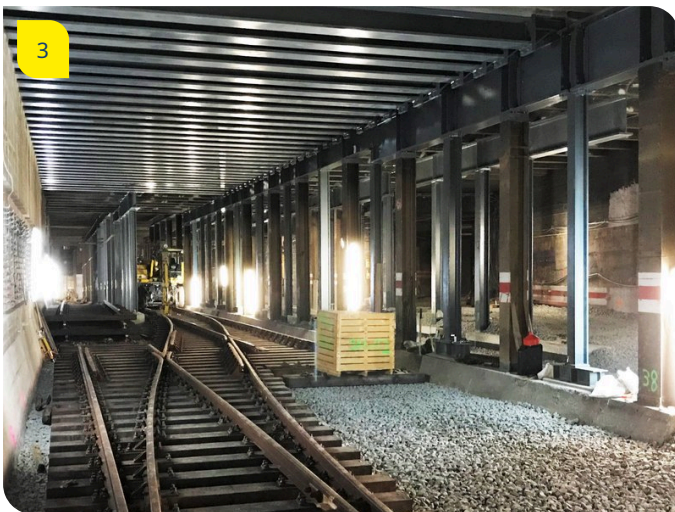


Image notes

1

Rotes Rathaus, Berlin

The new station stands out with unusual mushroom-capped columns and an eye-catching pattern of light and dark terrazzo tiles on the walls.

2

Rotes Rathaus, Berlin

Berlin's "Rotes Rathaus", or "Red Town Hall" is the headquarters of the current Bürgermeister, the Berlin Chancellery and the Berlin Senate meeting venue. Below it, trains travel through the "Rotes Rathaus" U-bahn station.

3

Rotes Rathaus, Berlin

PORR built a 130-metre-long table ramp construction to connect the two station levels.

In total, the consortium laid around 2,000 metres of track and 14 points.

Do you have questions about the project or would you like to learn more? Feel free to contact us for further information.

PORR AG Group Communications

Absberggasse 47

1100 Wien

T +43 50 626-0

E-Mail: comms@porr-group.com