



# Urban life on the Papierbach in Landsberg am Lech

## Data and facts

### Company

PORR GmbH & Co. KGaA, Munich branch

### Type

Technical building services planning, Commercial building, Residential construction

### Runtime

11.2020 - 08.2024

### Principal

Ehret+Klein GmbH

[Project report online](#)

[www.porr-group.com](http://www.porr-group.com)



# Turnkey construction of the “Spöttinger Höfe” and “Am Papierbogen” building sections

---

Watch our project video\* :

- [PORR Germany . Living by the Papierbach, Landsberg/Lech](#)
- 

## Apartments for all stages of life

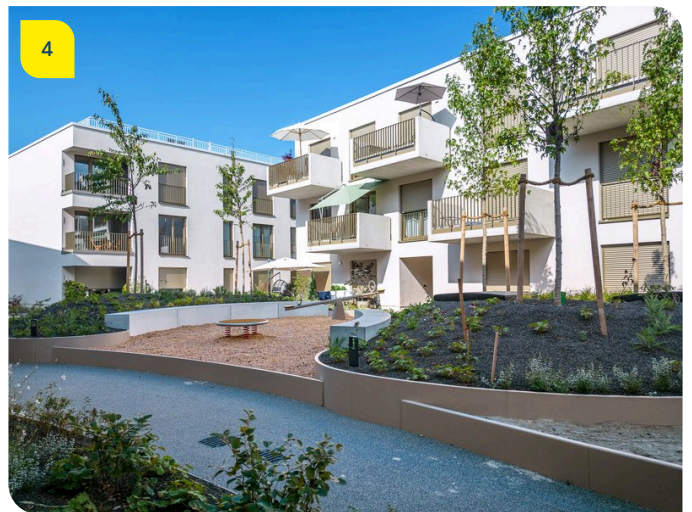
The range of apartments is diverse and includes single apartments, family apartments, lofts and townhouses. The floor plans of the ‘Am Papierbogen’ apartments are also variable, allowing the units to be combined like building blocks. Thanks to the threshold-free design, they can be used by the elderly without difficulty. The Spöttinger Höfe are also designed to be barrier-free with open floor plans. Modern, urban living is perfectly realised here: a view of the greenery, no street noise and local amenities for daily needs in the building.

‘We are very proud to have been involved in this flagship project. It is exemplary in terms of both social and ecological sustainability,’ said Michael Schütz, commercial regional manager of PORR building construction Region South, after the event. Like all buildings at the Papierbach, the two sections built by PORR are heated by a central groundwater heat pump, meet the KFW-55 energy efficiency standard and contribute to a healthy microclimate with extensive green roofs.

(\*video platform Vimeo)



# Impressions



## Image notes

1

Urban life on the Papierbach in Landsberg am Lech

The range of apartments on offer is diverse and includes single apartments, family apartments, lofts and townhouses.

2

Urban life on the Papierbach in Landsberg am Lech

Sustainability also played a major role in the urban planning concept.

3

Urban life on the Papierbach in Landsberg am Lech

The Munich branch of PORR GmbH & Co. KGaA was awarded the contract for the turnkey realisation of two of the 11 construction phases.

4

Urban life on the Papierbach in Landsberg am Lech

Turnkey construction of the 'Spöttinger Höfe' and 'Am Papierbogen' phases

Do you have questions about the project or would you like to learn more? Feel free to contact us for further information.

**PORR AG Group Communications**

Absberggasse 47

1100 Wien

T +43 50 626-0

E-Mail: [comms@porr-group.com](mailto:comms@porr-group.com)