



# Wilstedt-Süd wind farm, Wilstedt

## Data and facts

Company	Stump-Frankl, Region Nord, NL Oldenburg
---------	---

Type	Foundations
------	-------------

Runtime	03.2022 - 05.2022
---------	-------------------

Principal	Max Bögl Wind AG
-----------	------------------

[Project report online](#)

[www.porr-group.com](http://www.porr-group.com)

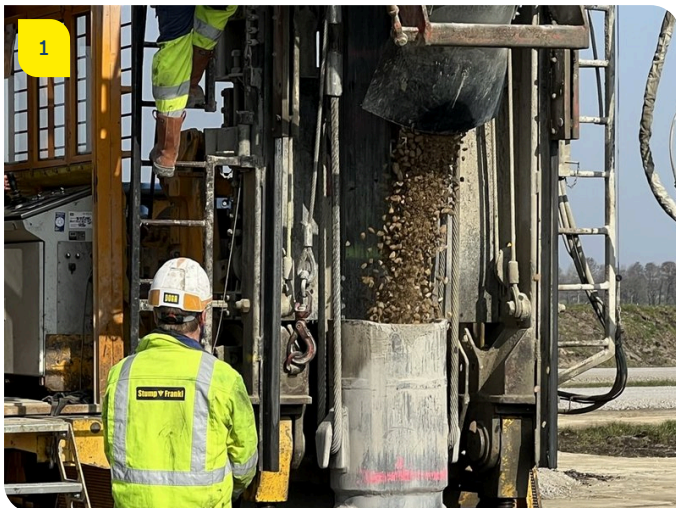


# Wilstedt-Süd wind farm

The extremely settlement-prone soil of the site is chiefly composed of peat, organic silt and slush, but load bearing sands were found between 6 and 12m below the site of the proposed foundations. As a result, a deep pile foundation was the only possible option. For a variety of reasons, the well-proven Frankipfahl NG® pile system with an expanded pile foot was chosen for this project. This system is ideally suited for transferring high loads, and the ability to flexibly adapt the pile number, length and foot volume to suit site conditions represents a significant advantage. In some areas, the site soil at the planned casing depth still did not have sufficient load bearing capacity, and so the soil was rammed to compact the earth both above and below the pile casing depth before the actual pile ramming process began.

Once the installation is complete, the state-of-the-art Nordex N149 wind turbines will supply the electricity needs of 24,000 four-person homes each year. The employer for these foundation works was the wind power division of the Max Bögl Group.

## Impressions



## Image notes

1

Wilstedt-Süd wind farm, Wilstedt

2

Windpark Wilstedt-Süd, Wilstedt



The Oldenburg branch produced 336 Frankipile NG® piles with a diameter of 51 cm and pile lengths of up to 16 metres for the deep foundations of the wind farm.

Once completed, the modern Nordex N149 wind turbines will supply an estimated 24,000 four-person households with electricity every year.

3

#### Windpark Wilstedt-Süd, Wilstedt

Peat, mud and silt characterise the very settlement-sensitive soil in Wilstedt and load-bearing sands are only found at depths of between 6 and 12 m in the foundation area.

Do you have questions about the project or would you like to learn more? Feel free to contact us for further information.

#### **PORR AG Group Communications**

Absberggasse 47

1100 Wien

T +43 50 626-0

E-Mail: [comms@porr-group.com](mailto:comms@porr-group.com)